

夹头 - COLLETS

ER-DIN 6499

跳动 - RUN OUT

≤ 0,010



夹头 ER Collet
Art. 170/ER

钻-铣 / Drilling-milling

夹头 COLLET	Ø	码 - Code
ER 11	Ø1 / 7	9.ER.11000 / 1 (Ø1)
ER 16	Ø1 / 10	9.ER.16000 / 1 (Ø1)
ER 20	Ø1 / 13	9.ER.20000 / 1 (Ø1)
ER 25	Ø1 / 16	9.ER.25000 / 1 (Ø1)
ER 32	Ø2 / 20	9.ER.32000 / 2 (Ø2)
ER 40	Ø3 / 30	9.ER.40000 / 3 (Ø3)

夹头 - COLLETS

ET-1



夹头 ET-1 Collet
Art. 170/C

浮动攻丝 / Tapping

夹头 ET1 (compensated) COLLET ET1 (compensation)	Ø	码 - Code
-		-
ET 1-16 (M2 - M8)	Ø1,4 / 6	9.ET.16000
ET 1-20 (M2 - M8)	Ø2,2 / 7	9.ET.20000
ET 1-25 (M2 - M12)	Ø2,5 / 10	9.ET.25000
ET 1-32 (M3,5 - M16)	Ø4,5 / 12,5	9.ET.32000
ET 1-32 (M6 - M16)	Ø6 / 15	9.ET.32000

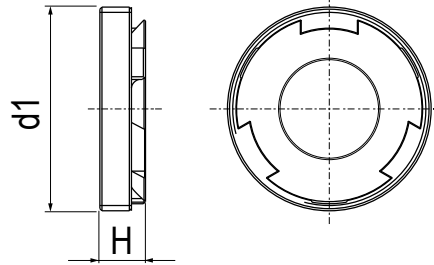
订单示例 - Example to order : ER25 - Ø10 = 9.ER.25000/10

螺母 - NUTS ZZ - ES

扳手 - WRENCHES ZZ - ES



螺母 ZZ Nut
Art. 174



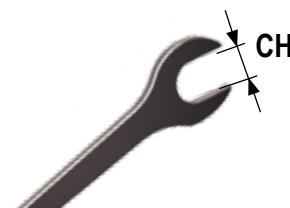
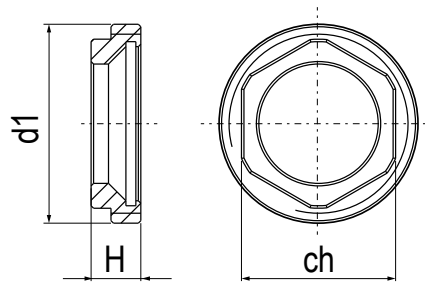
适配器-螺母+螺钉 - Frontal nut + Screw on adapter

不建议分开购买 - NOT SALEABLE SEPARATLY

螺母型号 NUT TYPE	d1	H	码 - Code
ER-16 ZZ	M24x1	6	9.ER.160ZZ
ER-20 ZZ	M28x1,5	6,5	9.ER.200ZZ
ER-25 ZZ	M32x1,5	7	9.ER.250ZZ
ER-32 ZZ	M40x1,5	7,5	9.ER.320ZZ
ER-40 ZZ	M50x1,5	10	9.ER.400ZZ



螺母 ES Nut
Art. 175



扳手 ES Wrench
Art. 175/CH

六角螺母 - Hexagonal nut

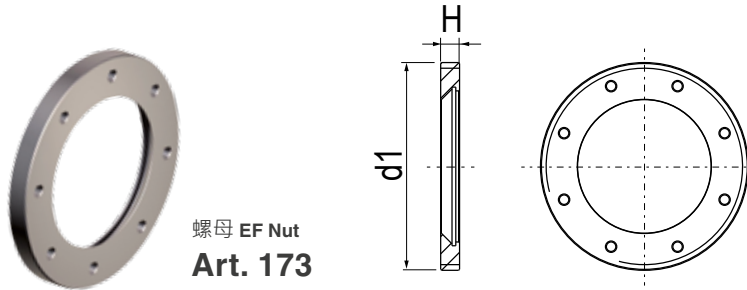
六角螺母扳手 - Wrench for hexagonal nut

螺母型号 NUT TYPE	d1	H	CH	码 - Code
ER-20 ES	M28x1,5	14	22	9.ER.200ES
ER-25 ES	M32x1,5	14	27	9.ER.250ES
ER-32 ES	M40x1,5	17,5	32	9.ER.320ES

扳手 WRENCHES	码 - Code
CH-20 ES	9.CH.200ES
CH-25 ES	9.CH.250ES
CH-32 ES	9.CH.320ES

螺母 - NUTS

EF - EZ



螺母 EF Nut
Art. 173

螺母-外螺纹前孔 - Nut with external thread and frontal holes

螺母型号 NUT TYPE	d1	H	码 - Code
ER-16 EF	M24x1	8	9.ER.160EF
ER-20 EF	M28x1,5	11	9.ER.200EF
ER-25 EF	M32x1,5	12	9.ER.250EF
ER-32 EF	M40x1,5	14	9.ER.320EF

扳手 - WRENCHES

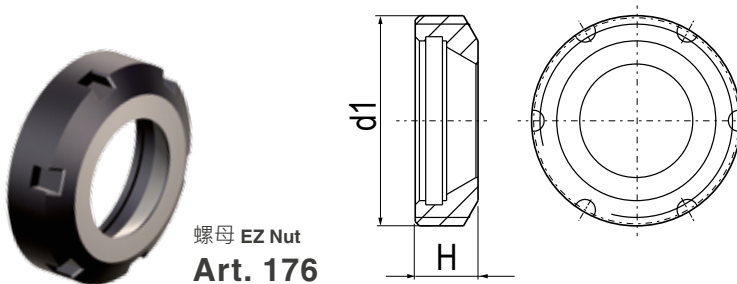
EF - EZ



扳手 EF Wrench
Art. 173/CH

扳手-外螺纹前孔
With external thread and frontal holes

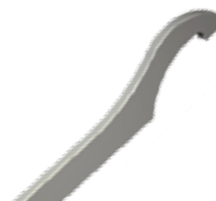
扳手 WRENCHES	码 - Code
CH-16 EF	9.CH.160EF
CH-20 EF	9.CH.200EF
CH-25 EF	9.CH.250EF
CH-32 EF	9.CH.320EF



螺母 EZ Nut
Art. 176

径向螺母 - Nut with radial section

螺母型号 NUT TYPE	d1	H	码 - Code
ER-40 EZ	M50x1,5	20	9.ER.A00EZ



扳手 EZ Wrench
Art. 176/CH

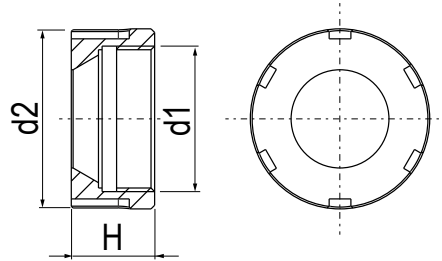
扳手- 径向螺母 - For nut with radial section

扳手 WRENCHES	码 - Code
CH-40 EZ	9.CH.400EZ

螺母 - NUTS MINI



螺母 MINI Nut
Art. 177



微型螺母 - Nut Mini type

螺母型号 NUT TYPE	d1	d2	H	码 - Code
ER-20 MINI	M24x1	28	19	9.ER.2000M

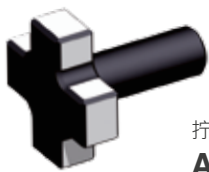
扳手 - WRENCHES MINI



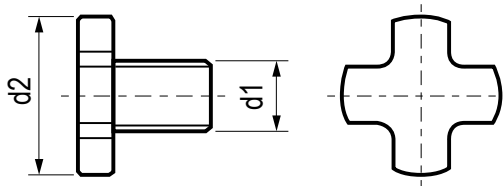
扳手 MINI Wrench
Art. 177/CH

扳手-微型螺母 - Wrench for nut type mini

扳手 WRENCHES	码 - Code
CH-20 Mini	9.CH.2000M



拧 PF Screw
Art. 178



面铣刀锁紧螺钉 - Shell end milling cutter Lock screw DIN6367

螺母型号 NUT TYPE	d1	d2	码 - Code
PF-16 VT	M8	20	9.PF.160VT
PF-22 VT	M10	28	9.PF.220VT
PF-27 VT	M12	35	9.PF.270VT



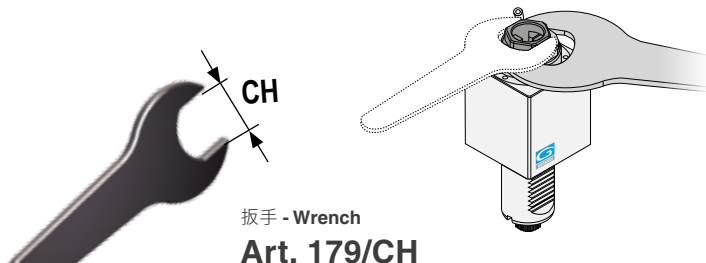
扳手 PF Screw
Art. 178/CH

扳手 -面铣刀锁紧螺钉- Wrench for lock screw

扳手 WRENCHES	码 - Code
CH-16 PF	9.CH.160VT
CH-22 PF	9.CH.220VT
CH-27 PF	9.CH.270VT

扳手 - WRENCH VDI

永久包含 - ALWAYS INCLUDED

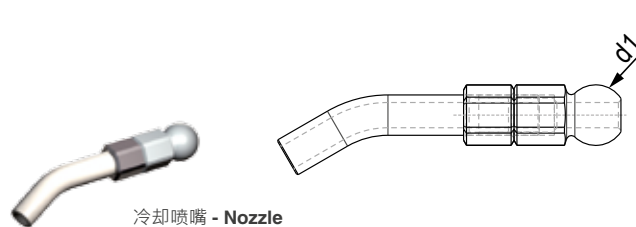


扳手 - Wrench
Art. 179/CH

扳手-外六角锁紧 - Driven tools lock wrench

扳手 WRENCHES	ER	ch	码 - Code
CH-27 ES	16	27	9.CH.270ES
CH-36 ES	20	36	9.CH.360ES
CH-41 ES	25	41	9.CH.410ES
CH-46 ES	32	46	9.CH.460ES
CH-56 ES	40	56	9.CH.560ES

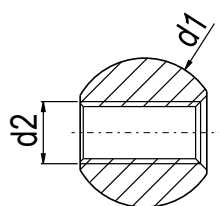
冷却喷嘴 COOLING - NOZZLES



冷却喷嘴 - Nozzle
Art. 180

冷却喷嘴 - Cooling nozzle

d1	码 - Code
9	9.18.00009
11	9.18.00011



喷嘴球形销 - Ball Pin
Art. 179

喷嘴球形销 - Nozzle ball pin

d1	d2	码 - Code
10	M5	9.17.900M5
12	M8	9.17.900M8



冷却喷嘴 - Nozzle
Art. 181

N.12 号冷却喷嘴 - #12 cooling nozzle extensions

d1	d2	码 - Code
10	M5	9.18.100M5
12	M8	9.18.100M8